



Children's  
Oral Health  
Network  
of Maine

# 2025 IMPACT REPORT



**The 2025 COHN Steering Committee:** L-R, Standing Row: Dr. Albert Abena, University of New England College of Dental Medicine; Lyvia Gaewsky, From the First Tooth; Sanaa Abduljabbar, Maine Access Immigrant Network; Dr. Kailee Jorgenson, Mainely Teeth; Sherry Laliberte, Simply Smiles; Sarah Lewis, Maine Access Immigrant Network; Becca Matusovich, COHN  
Seated Row: Tracey Jowett, University of Maine at Augusta; Dee Kerry, Maine Chapter of the American Academy of Pediatrics; Ayla Burke, [Southern Kennebec Child Development Corporation]; Kalie Hess, COHN.

Not Pictured: Kate Christiansen, Maine Center for Disease Control; Deqa Dhalac, Cross Cultural Community Services.

**T**his year has brought no shortage of challenges. In addition to longstanding systemic barriers, new and unprecedented pressures have impacted our shared work. In the Children’s Oral Health Network’s eight years, we’ve become experts at pivoting and adapting. Though we’ve come to understand that systems change work demands resilience, the challenges facing our Network are significant. 2025 has invited us to acknowledge the obstacles we face and to reaffirm the network’s commitment to our mission of mobilizing partners and communities to transform oral health care in Maine.

Despite the difficulties, we have celebrated meaningful state-level progress and policy momentum, while maintaining steady gains in programs and pilots that bring more children access to oral health care. We have also expanded our Board of Directors with the addition of Morgan Hynd and strengthened staff capacity as Emilie Knight and Molly Williams have stepped into larger roles focused on grants management, program development, data, and communications.

Our network continues to grow through cooperative, grant-supported initiatives that strengthen collaboration and deepen partnerships. As families and communities face increasing instability and reduced access to social supports, the importance of this work is only amplified. Continued success in collaborative funding reflects the strength of our Network model and funders’ recognition of our collective impact.

Together, we designed this network to be nimble and adaptive, while keeping our focus steady. Even when we face harsh environments, our collective momentum endures. Maine’s children deserve systems that support them in growing up free from preventable dental disease, and we remain committed to creating this reality, together.

# 2025 Network Priorities, Programs, & Partners



## Priorities

Bringing Oral Health Care into Schools & Community Settings  
Expanding & Diversifying the Workforce of the Future  
Funding & Sustaining the Oral Health System of the Future  
Integrating Oral Health into Primary Care

## Programs & Projects

Cavity Free Futures	Maine Oral Health Funders
Cumberland County Oral Health Project	Transformation Initiative
Dental Steps for ME	Oral Health Equity Collaborative
Fostering Systems Change	Oral Health Industry Partnership
From the First Tooth	Oral Health Navigation Learning Series
Maine Dental Connection	Strengthening Communities through
Maine Dental Connection Clinical Consortium	Oral Health Resilience

## Partners engaged in COHN initiatives and workgroups

Adoptive and Foster Families of Maine & The Kinship Program	Maine Health Access Foundation
Aroostook County Action Program	Maine Health Data Organization
Bingham Program	Mainly Teeth
Community Concepts Inc.	Maine Office of Child and Family Services
Community Dental	Maine Office of MaineCare Services
Cross Cultural Community Services	Maine Oral Health Centers Alliance
Cumberland County Public Health	Maine Oral Health Funders
Disability Rights Maine	Maine Primary Care Association
Dr. Harry E. Davis Pediatrics at Mercy Northern Light	Maine Public Health Association
From the First Tooth	MCD Global Health
Greater Portland Health	Midcoast Maine Community Action
Jessie Albert Dental and Orthodontic Center, Catholic Charities of Maine	New Mainers Public Health Initiative
Kennebec Valley Community Action Program	Northeast Telehealth Resource Center
Kennebec Valley Family Dentistry	Northern Light Health
Klingenstein Philanthropies	Partnerships for Health
Maine Access Immigrant Network	Penobscot Community Health Care
Maine Association of School Nurses	Promise Early Education
Maine CDC School Oral Health Program	Sadie & Harry Davis Foundation
Maine Center for Disease Control and Prevention	Simply Smiles
Maine Chapter American Academy of Pediatrics	Southern Kennebec Child Development Corporation
Maine Dental Association	St. Apollonia Dental Clinic
Maine Dental Hygienists' Association	The Opportunity Alliance
Maine Department of Education	University of Maine at Augusta
Maine Department of Health and Human Services	University of New England
Maine Equal Justice	University of Southern Maine, Catherine Cutler Institute
MaineGeneral	Virtual Dental Home Consulting, Inc.
MaineHealth	Waterville Community Dental Center
	Youth Leadership Advisory Team



This report highlights some of the key projects and programs through which network partners are increasing access to oral health care among Maine's children. The following numbers reflect the reach and impact of programs across the state, many of which are featured in the stories that follow.

## Spruce the Dental Health Moose

page 5

**5,904** Spruce the Moose Dental Health kits and **4,689** additional toothbrushes for infants & children distributed to families through **20** healthcare practices and **7** Head Start programs

## MOHCA

page 7

**375** of 488 Maine ZIP codes served – **77%!**

MOHCA providers deliver **~30%** of all MaineCare periodic evaluations and more than **70%** of all telehealth dental services statewide

## Maine Dental Connection

page 9



"The Night Before the Virtual Dentist" is available as a digital read-aloud in **7 languages!**

**137** digital read-aloud views in the first 4 months!

**2,000 copies** of "The Night Before the Virtual Dentist" were distributed to children at Maine Dental Connection Head Start sites

**7** Head Start agency partners & **5** dental practice partners continued to collaborate on community-based care delivery programs in early childhood centers

## Oral Health Navigation Learning Series

page 11

**38 unique partners** located in **8 counties** working all across the state have been involved in the development and early implementation

**159 digital badges earned**

Adoptive and Foster Families of Maine and Maine Access Immigrant Network were the first organizations to pilot Level 3 digital badges and have staff complete the full microcredential!

## Expansion of SDF

page 13

**201** primary care practices participate in From the First Tooth

**44** medical providers have been trained in applying SDF

**4** primary care practices and **4** School Based Health Centers have started applying SDF

**6** school nurses serving 15 schools and **1** school-based health center team participated in an SDF pilot

## Cumberland County Project

**70** schools of 88 in Cumberland County partner with a provider to offer students comprehensive oral health care – **80%** of schools in the county!

## Cavity Free Futures

**3** community partner organizations helped design a new family-focused model of coaching for disease management

**6** staff participants beta-tested training and gathered input from **12** families/students

## Maine CDC School Oral Health Program

**299** schools statewide with on-site oral health screenings and fluoride varnish through the SOHP

**23,157** student visits in the 2024-2025 school year

**1,043** students had urgent referrals and

**6,183** students had non-urgent referrals for issues noted during these screenings

# SPOTLIGHT:

## Mapping the Network's Strategies



Our network has steadily grown in recent years, as the state has emerged from the COVID-19 pandemic and as several pilot projects have transitioned to more sustainable care delivery models. We first developed a [theory of change](#) to articulate the root causes of systemic conditions the network strives to shift and the strategies that shape our initiatives and projects. In 2025, we created several new tools to support clear, accessible communication: a [strategic plan](#) and a new [website](#). The COHN strategic plan provides a shared roadmap of network priorities. The redesigned website serves as a central hub where partners, policy makers, and funders can learn about the full breadth of the network’s initiatives and easily access resources. Together, these tools foster collaboration, engage more partners, and communicate more effectively and more publicly about how we carry out our mission.



Screenshot of the [Network Priorities page](#) of COHN's new website



## SPOTLIGHT:

# Maine's Oral Health Mascot: Spruce



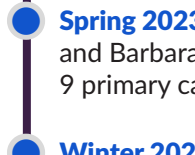
From the First Tooth (FTFT), the Maine CDC School Oral Health Program (SOHP), the Maine CDC Oral Health Program (MeCDC), and COHN are partnering on the development of the “Spruce the Dental Health Moose” public education campaign. The purpose of this statewide collaboration is to develop a comprehensive, multi-setting campaign that empowers children, families, and providers with data-driven information about early, effective, and accessible oral health care. The long-term goals of this campaign are to increase awareness that:

- Oral health is critical to overall health;
- Minimally invasive care can effectively treat cavities; and
- Oral health care is available beyond the dental office.

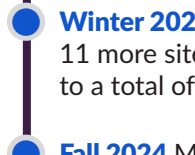
The timeline on the right illustrates how the core Spruce campaign partners arrived at the idea of a unified campaign and how we are working together to weave existing resources and design new key pieces into a unified public-facing campaign. From 2026 forward, you can expect to see and hear from Spruce the Dental Health Moose in primary care offices, schools, childcare settings, and many other places!



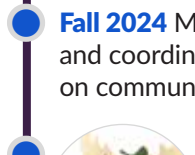
**Winter 2023** FTFT develops Spruce-branded oral health supply kit pilot, addressing provider feedback that families lack tools for home dental hygiene care



**Spring 2023** Funds secured from Northern Light Health and Barbara Bush Children’s Hospital to launch kit pilot at 9 primary care sites



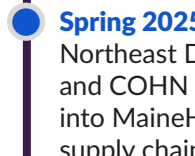
**Winter 2024** Additional funds secured to expand pilot for 11 more sites, bringing Spruce the Dental Health Moose to a total of 20 primary care sites



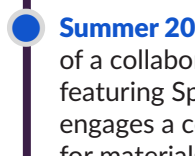
**Fall 2024** Maine CDC OH staff convenes partners to share and coordinate educational materials, particularly focused on communication around minimally invasive care



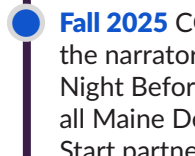
**Winter 2025** SOHP integrates Spruce into an animated [educational video series](#) and their annual student poster contest with the theme “Spruce up your oral health!”



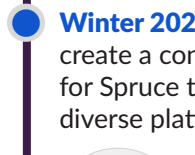
**Spring 2025** FTFT secured additional funds from Northeast Delta Dental, Bowdoin Common Good Grant, and COHN to continue kit distribution, now integrated into MaineHealth and Northern Light Health system supply chains



**Summer 2025** Core partners decide to develop the idea of a collaborative cross-setting statewide campaign featuring Spruce the Dental Health Moose, and SOHP engages a consultant to help create a shared framework for materials to be used in primary care, pre-schools/childcare, and schools



**Fall 2025** COHN integrates Spruce as the narrator for read-alouds of “The Night Before the Virtual Dentist” and all Maine Dental Connection Head Start partners receive Spruce supply kits to distribute along with the book



**Winter 2025** Partners launch a re-branding effort to create a consistent visual identity and shared messaging for Spruce the Dental Health Moose to be applied across diverse platforms and settings



**Stay tuned** for the reveal of the new Spruce image arriving in 2026!



When Community Clinical Services, the only pediatric dental practice accepting MaineCare in the Lewiston/Auburn area, unexpectedly closed in early 2025, nearly 2,000 patients suddenly lost their dental home. More than 800 were already on a waiting list. Within days, the Maine Oral Health Centers Alliance (MOHCA) mobilized. Member centers began fielding daily referral calls, triaging urgent versus routine needs, and exploring expanded school-based services to reach children where they already were. It was the kind of coordinated crisis response that simply wouldn't have been possible five years ago, and it illustrated why MOHCA is so critical.

The Children's Oral Health Network has been a beacon through uncertain times. With COHN's support to our practices through grants, helping to coordinate Continuing Education and learning opportunities, and creating space for providers to come together to discuss treatment methods, we have been able to lean on not only COHN, but other practices as well, through support of the Maine Oral Health Centers Alliance. Access to care has been a recurring problem in our state, and leaning on these resources has allowed us to provide better in-house care for our patients and help them to better manage care that must be referred.

—Dr. Kailee Jorgenson, MOHCA President

## The Scope of MOHCA

MOHCA is a unique collaborative network that unites leaders from non-profit oral health centers and other statewide partners to provide mutual support, and strengthen capacity and sustainability of the oral health centers while increasing access to quality care. In 2025, MOHCA completed its first comprehensive service area analysis, revealing the true scale of MOHCA members' reach: these six nonprofit dental centers serve patients from 457 unique ZIP codes across Maine, New Hampshire, Massachusetts, and beyond. This number represents their brick-and-mortar locations alone, not yet counting mobile services. MOHCA members completed 35,071 dental visits with 24,366 MaineCare members in 2024, an increase of approximately 4,000 people from the prior year.



MOHCA President, Dr. Kailee Jorgenson, and Treasurer, Barbara Covey, present a map of the MOHCA practices service area in the Hall of Flags at the Maine State House.



Data presented at MOHCA's third annual meeting underscored the MOHCA providers' outsized role in Maine's oral health system, delivering roughly 30% of all routine dental check-up exams for MaineCare patients and more than 70% of all telehealth dental services statewide. Established MOHCA patients also have lower emergency department utilization for dental issues, indicating that having a dental home can help avoid the need for more costly downstream care.

## A Year of Resilience

These numbers tell one story. The year's challenges tell another. In 2025, MOHCA members navigated payment system breakdowns, looming federal policy changes that could affect tens of thousands of MaineCare members, persistent workforce shortages, and huge challenges in helping MaineCare patients access essential specialist referrals.

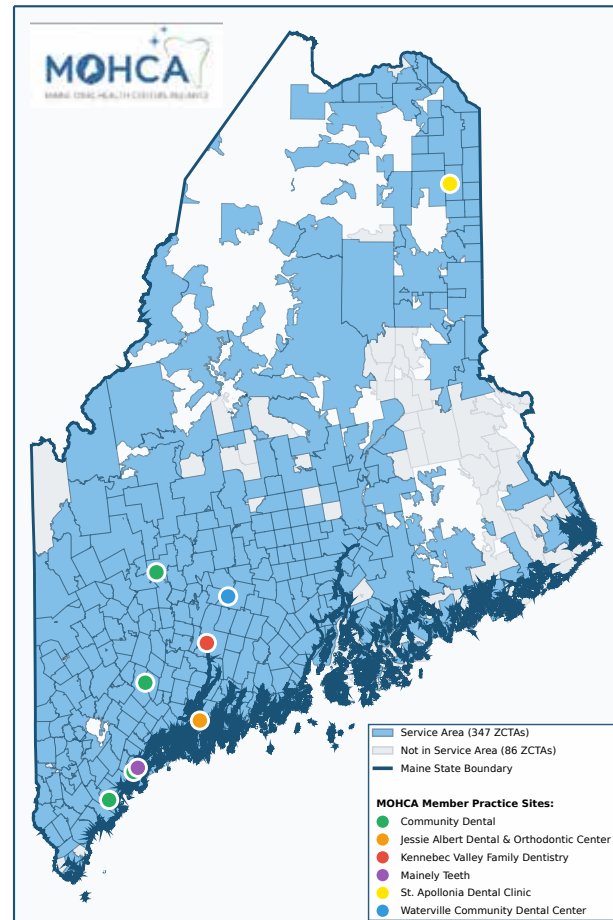
A new MOHCA project funded through Maine Health Access Foundation and HRSA's Rural Northern Border Region Outreach Program supports a centralized Specialist Referral Coordinator. Launched in late 2024, this project has evolved into a systematic tracking effort that is quantifying the specialist access crisis for the first time. In 2025, Mainely Teeth tracked 677 specialist referrals, with 91% being MaineCare patients, and 92% under age 21. The data revealed a stark reality: only 1 in 5 of the patients referred to specialists have been able to secure the necessary specialist appointment within six months of their referral. Oral surgery and extractions accounted for about half of all referrals, underscoring the acute shortage of specialists accepting MaineCare. This tracking system, which is now being refined and expanded, is building a shared understanding of the need for systemic change at the state level to improve access to specialist care.

## Looking Ahead

MOHCA's evolution since its founding reflects a fundamental truth about Maine's oral health landscape: no single practice can solve the access crisis alone. MOHCA's strength lies not only in its collective geographic reach but in the way member centers support one another: sharing referral pathways, coordinating crisis response, exploring group purchasing, and piloting innovations that any one organization may struggle to launch independently.

### Maine Oral Health Centers Alliance (MOHCA) Member Practice Sites Service Area

The shaded areas in the map below represent ZIP codes where MOHCA member dental centers provide services, reaching over 80% of Maine's communities through six member organizations.



Service Area Coverage: 347 of 433 ZIP Code Areas (80.1%)  
Maine Oral Health Centers Alliance (MOHCA) | Service Area Map



The Maine Dental Connection initiative (MDC) encourages and supports dental teams to provide prevention, early intervention, and diagnostic care in schools and childcare settings, connecting to office-based dentists through secure record sharing and teledentistry. The impact is compelling: **Over 85% of children can be kept healthy in community settings**, which reserves space in dental offices for patients who need further care directly from a dentist.

Building on 2022-2024 Head Start pilot success, the MDC has evolved into a flexible approach to promote more community-integrated dental homes. The initiative goals and strategies guide provider calibration and community partnerships, leveraging local resources to develop models that fit each region. One driving force of this evolution was the growth in Maine's Independent Practice Dental Hygienist (IPDH) workforce. Experienced IPDH Network partners Courtney Vannah of MCD Global Health, Tracey Jowett of Saving Smiles of Maine, and Sherry Laliberte of Simply Smiles helped COHN to articulate a "Collaborative Clinical Partnership" MDC workflow. This workflow demonstrates how school-based IPDHs can be empowered and equipped to serve as primary oral health care providers, working closely with dentists to ensure access to full services.

Through the 2024-2025 school year, active MDC practices faced staffing turnover and shortages. Committed to community-integrated care, these practices voiced a need for support to optimize the use of minimally invasive care (MIC). COHN supported MDC partners and other interested IPDHs to participate in and provide feedback on select MIC continuing education courses. Representing a diversity of implementation models and potential partnerships, dozens of clinicians - including dentists, dental therapists, registered dental hygienists, IPDHs, and dental assistants - participated in this professional development opportunity.

The feedback from participants was very positive:

"This opportunity has given me more confidence in my skills as a clinician and inspires me to push myself to my full capabilities as a provider for my patients."

"Hearing ideas from others who are participating in the MDC and how they are utilizing the minimally invasive care was eye-opening. It is always my goal to provide a positive experience for each child in my dental chair. With the MIC tools it will hopefully help them never develop dental anxiety."

**41** Participants in  
Maine Dental Connection  
professional development  
**25** dental hygienists  
**9** dentists  
**3** executive directors  
**2** dental therapists  
**2** dental assistants



Throughout 2025, COHN collaborated with Maine Dental Connection (MDC) Head Start partners to produce a first-of-its-kind outreach tool: “The Night Before the Virtual Dentist,” a children’s book created in collaboration with Natasha Wing, the well-known author of “The Night Before” series. Over 2,000 copies of the book have been distributed to Maine children with a digital read-aloud in seven languages. The book gives families a welcoming picture of how MDC works and helps to normalize community-based care.

Together, these efforts mark a shift from pilot to sustainability. MDC is evolving quickly into a movement of providers, community partners, and families who are advocating for lasting change in how we connect Maine’s children to consistent, comprehensive oral health care.



*Staff members of Community Concepts, Inc. assemble books and kits for distribution to families in Oxford and Franklin Counties. Danielle Hamlin, Regional Family Engagement Manager (second from left, front row), had the original idea for “The Night Before the Virtual Dentist” book project to celebrate and promote community-based dental homes.*

*Readers can access a digital read-aloud available in 7 languages at [www.themainedentalconnection.org/book](http://www.themainedentalconnection.org/book)*



In 2022, with support from the Maine Department of Labor’s State Workforce Board and the Maine Health Access Foundation, COHN launched the [Oral Health Industry Partnership](#) (OHIP), a first-of-its-kind statewide collaboration focused on strengthening Maine’s oral health workforce and opening doors to public-health-oriented dental careers for communities traditionally underserved by the system.

Together, nonprofit dental providers, workforce partners, and community-based organizations developed the [Oral Health Navigation \(OHN\) Learning Series](#): a low-barrier training designed to expand workforce capacity and increase access to preventive care. Working closely with Maine CDC, Maine Access Immigrant Network (MAIN), and Cross Cultural Community Services, the group created a community-centered approach to oral health education and care coordination. Strategic partners across the state, including the Maine Oral Health Centers Alliance (MOHCA), Maine Primary Care Association, Maine Dental Connection partners, Wabanaki Public Health, and Adoptive and Foster Families of Maine (AFFM), helped pilot and refine the online modules.

The OHN Learning Series officially launched in 2025 as a foundational training for individuals interested in oral health careers or integrating oral health into existing roles. Through self-paced online modules, learners explore oral health basics, care delivery systems, and reimbursement structures, with optional employer-specific and experiential components. Participants earn University of Maine System-issued digital badges in Oral Health Foundations, gaining credentials that demonstrate new competencies and open pathways to oral-health-related careers. A toolkit was also created for employers interested in customizing a Level 3 badge for the OHN microcredential into their staff development to support integration of oral health into their organization’s services.

The OHN Learning Series and the Oral Health Foundations Microcredential have grown into a resource that equips frontline workers in healthcare, dental, and community-based settings with the knowledge and tools to help families navigate the oral health system, and that uplift oral health knowledge across many COHN initiatives.



**38**  
**unique**  
**partners**  
including

**19**  
**employer**  
**partners**

**9**  
**education**  
**partners**

located in  
**8 counties**  
& working statewide  
have participated in  
development and early  
implementation of the  
OHN Learning Series

**151**  
Level 1 & Level 2  
digital badges  
completed by the  
end of 2025



Long wait times for dental care are a special challenge for children in the foster care system. With support from the CareQuest Institute, the *Fostering Systems Change* project began in 2023 to build a system that connects children in foster, kinship, or adoptive care to oral health services. Because the foster care system already intersects with social service and medical sectors, the project seeks to integrate dental care into the team supporting each child.

## First OHN Full Microcredentials

AFFM, a core project partner, leveraged the OHN Learning Series to deepen staff understanding of the oral health system. Twelve staff members have completed the digital badge series, and two staff members have gone on to earn the full microcredential, developing a competency process with their supervisor. For AFFM's frontline staff who work daily to support Maine families, this expanded oral health knowledge better equips them to break down barriers to accessing care.

**8 people**

have earned the full microcredential to date

MAIN and AFFM were the first organizations to pilot Level 3 digital badges and have their staff teams complete the full microcredential!



"This training series is a great opportunity to improve the support we offer, strengthen trauma-informed care, and boost collaboration across agencies. The structured curriculum is based on proven practices and gives everyone a shared language and more effective ways to communicate and calibrate. High-quality training like this can also improve job satisfaction and stabilize roles. And as more providers complete the series, the field will benefit from a broader, more skilled pool of workers who are equipped to better serve families."

—OHN Learning Series participant



Key partners in the *Fostering Systems Change* project celebrate with John Gabelus from CareQuest: (from left) Abby Payson, Mainely Teeth; Courtney Vannah, MCD Global Health; Becca Matusovich, COHN; John Gabelus, CareQuest; Ahmen Cabral, USM Cutler Institute; Director Bobbi Johnson and Dr. Adrienne Carmack, DHHS Office of Child and Family Services



Promoting Silver Diamine Fluoride (SDF) as a minimally invasive treatment option is an established COHN priority. In 2025, partners expanded opportunities for hygienists, pediatricians, and school-based health care providers to learn first-hand how effective SDF can be in arresting decay and improving oral health outcomes.



## MIC Training at UMA



In late September, dozens of dental hygienists from around the state gathered in Lewiston for a full day continuing education course called Advancing Trends in Dental Hygiene put on by UMA and sponsored by COHN. The packed agenda offered updates about Maine’s hygiene scope of practice, inspiration about innovative care delivery models, and hands-on minimally invasive care lab time.

“This opportunity has given me more confidence in my skills as a clinician and is inspiring me to push myself to my full capabilities as a provider for my patients.”

—Advancing Trends in Dental Hygiene participant



## School Nurses SDF Pilot



In a pilot supported by a grant from CareQuest Institute for Oral Health, school nurses and school based health center providers were trained in evidence-based medical-dental integration and minimally invasive care to identify early carious lesions and apply silver diamine fluoride (SDF). The pilot engaged six school nurses and one School-Based Health Center (SBHC) team with hands-on training, ongoing mentorship, and remote support to build skills and confidence in providing this early intervention oral health service.

“As a nurse caring for children daily, I witness the pain and suffering from tooth decay and the loss of school time. SDF is not a substitute for preventive care or treatment of serious issues; it is a tool that arrests the cavity and allows for relief from pain and suffering while we try to secure additional services. The difference in the students treated was truly incredible.”

—School Nurse Pilot participant



### Child who received SDF



Mobile hygienists regularly visit schools to provide oral health care to children in community settings. Their scope of practice covers a range of minimally invasive treatments, including applying SDF. A child in Kennebec County was excited to share about her recent experience getting SDF at school and to compare it to a previous experience getting traditional fillings.

“When I was little and I went to the dentist, I had to get fillings. It kind of tasted bad sour and bad bitter, and it felt like it stung my gums. It wasn’t the best experience. I opened my mouth and shut my eyes tight and I waited. When I saw the hygienist at school this year, it didn’t hurt at all. It wasn’t as bad as getting my fillings. It was fine. I had a little bitter taste. I was with her for like 8 minutes, and then I just went back to class.”

—3rd Grader, Kennebec County



### FTFT SDF



In 2022, a group of MaineHealth pediatricians recognized the potential of using Silver Diamine Fluoride (SDF) treatment as a patient-centered tool to address dental caries during the well-child check. MaineHealth pediatricians partnered with the From the First Tooth (FTFT) program to initiate SDF service integration into the MaineHealth system, which resulted in the launch of an SDF integration pilot that concluded in August 2025.

“Pediatricians have so much on their plate that they need to cover with families at different visits, and some might see this as an additional task that pediatricians are taking on because patients can’t get the dental care that they need. But I would say this is an important one because of the morbidity associated with dental decay in our patients.”

—Dr. Brian Youth, pediatrician at MaineHealth, as quoted in [The Maine Monitor](#)

# Oral Health Policy Wins and the Champions Who Nurtured Them



This year was an eventful and impactful one for COHN’s policy work. COHN members partnered with our longstanding legislative champion, Representative Lori Gramlich, to introduce [LD 1746: An Act to Reduce Dental Disease and Ensure Access to Essential Preventive Dental Care Among Maine Children](#). The bill proposed three major strategies: making permanent two oral health positions at the Maine CDC; empowering primary care providers to apply silver diamine fluoride; and supporting the expansion of comprehensive mobile dental care through the Maine CDC School Oral Health Program.



Rep. Gramlich

**Spotlight on Representative Lori Gramlich** Rep. Gramlich has championed a key priority bill for COHN each of the last 4 legislative sessions. Her passion and persistence have helped restore key Maine CDC and MaineCare positions, expand the School Oral Health Program, and secure resources for its growth. Her impact on children’s oral health is lasting, and we are deeply grateful for her leadership.

After years of advocacy, we were thrilled to see the two Maine CDC oral health positions included in the governor’s budget, marking a significant step forward for statewide oral health capacity. The other components of LD 1746 were carried over into 2026, and we continue to work with our champions to advance these priorities.\*

Beyond our priority bill, COHN members played a critical role in defeating a [proposed fluoride ban](#), advancing insurance parity for [services provided by dental hygienists](#), and weighing in on legislation to strengthen support for dental providers. More details on these and other bills are available in our [2025 policy update](#).



**National Advocacy** Kalie and Becca traveled to Washington, D.C. for the [Oral Health Progress and Equity Network’s Hill Day](#) in May 2025.

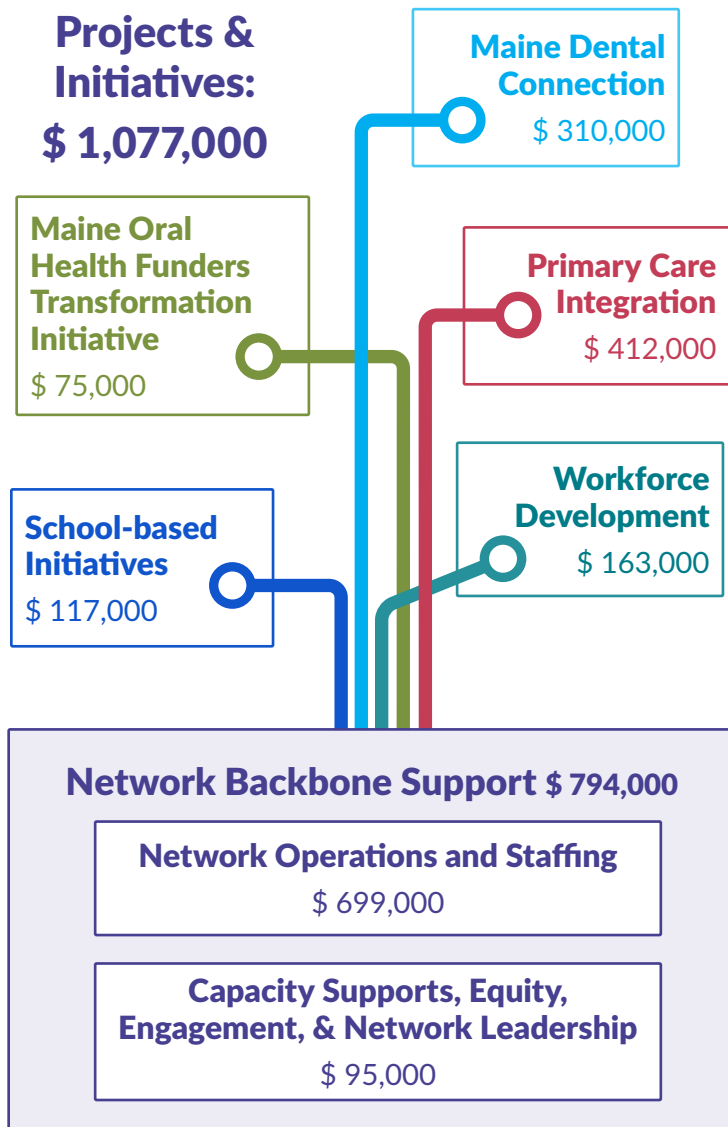
\* As of publication in May 2026, LD 1746 has been funded and the work has begun to move forward!



“In this challenging funding environment, particularly for the immigrant community, COHN has helped us sustain our oral health work by securing adaptable funding that brings our perspective to big-picture solutions and supports our ability to implement them in our community.”

–Sarah Lewis, Director, Main Access Immigrant Network, and COHN Steering Committee member

## How COHN Funding was Spent in 2025:



(All amounts rounded to the nearest thousand)

## We are grateful to the following funders for making all this work possible in 2025!

### Projects and Initiatives:

US Health Resources and Services Administration (*Rural Northern Border Region Outreach Program*)

Maine Department of Labor State Workforce Board (*American Rescue Plan Act, State and Local Fiscal Recovery Funds*)

Cumberland County Public Health (*American Rescue Plan Act, State and Local Fiscal Recovery Funds*)

Northern Border Regional Commission (*Catalyst Program*)

Maine Health Access Foundation  
CareQuest Institute

The National Association of Dental Plans Foundation

Northeast Delta Dental

Stephen and Tabitha King Foundation

Simmons Foundation

Margaret E. Burnham Charitable Trust

Bowdoin Common Good Grants

### Core Backbone Support:

Sadie and Harry Davis Foundation

Betterment Fund

Donations from individuals and organizations

“Even amid funding uncertainties, COHN has strengthened its role as an intermediary, securing large grants and directing the funding to partners working on the front line of Maine’s dental health crisis.”

–Morgan Hynd,  
Director, The Bingham Program,  
and COHN Board member